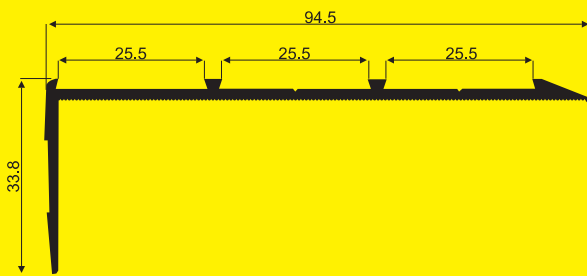
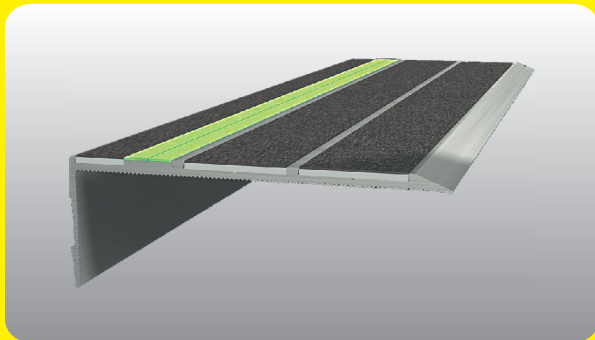




ARCHITECTURAL STAIR NOSINGS

- ▲ Integrate reliable non-slip surfacing with luminescent escape routing
- ▲ Super high performance capability to integrate with emergency escape systems
- ▲ Performance exceeds all anti-slip standards for stairs
- ▲ Versatile mix and match colour variations available
- ▲ Practical, universal-fitting profiles for both new and retrofit applications

EDGE DEFINING - NON SLIP - GLOW IN THE DARK



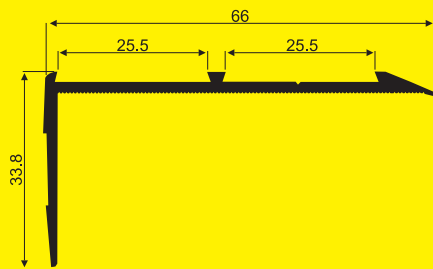
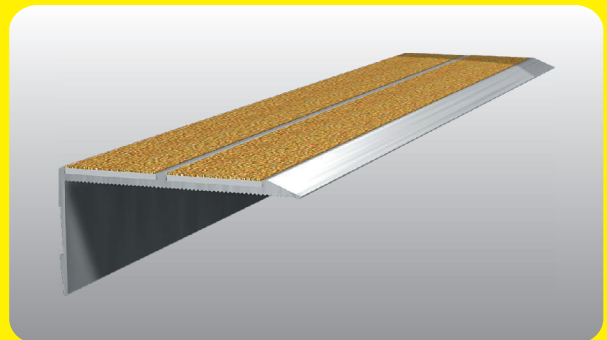
PRODUCT CODE ALN3

APPLICATION GENERAL USAGE
GRIPSTRIP INSERTS WITH OPTIONAL
GLOWSTRIP INCLUSION

BASE MATERIAL 6060 T5 ALUMINIUM - ANODISED

MAXIMUM LENGTHS ANY LENGTH UP TO 6 METRES

DESIGN



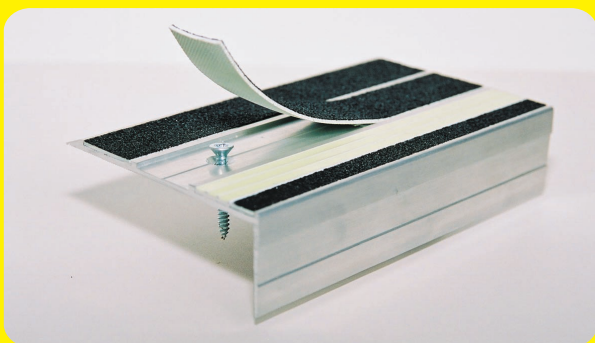
PRODUCT CODE ALN2

APPLICATION GENERAL USAGE
GRIPSTRIP INSERTS WITH OPTIONAL
GLOWSTRIP INCLUSION

BASE MATERIAL 6060 T5 ALUMINIUM - ANODISED

MAXIMUM LENGTHS ANY LENGTH UP TO 6 METRES

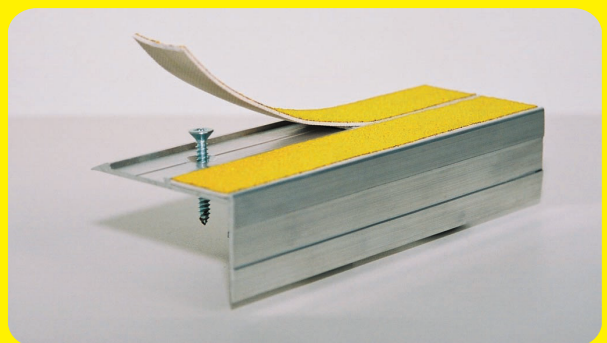
DETAILS



SCREW FIXING 8G x 25 (1") C/SUNK
ADHESIVE FIXING URETHANE MASTIC ADHESIVE

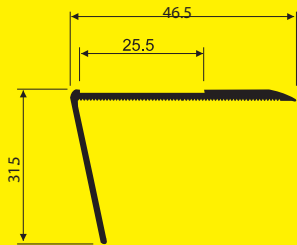
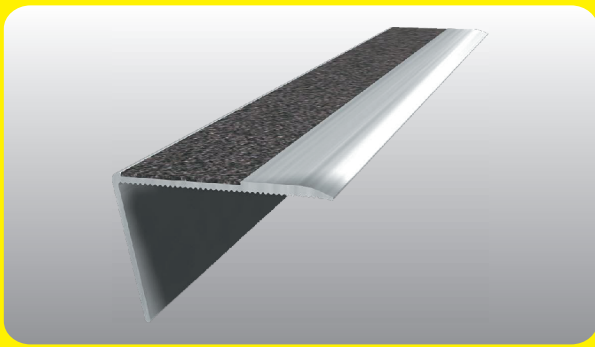
NYLON PLUG FOR CONCRETE 5 X 25 (1")

FIXING



SCREW FIXING 8G x 25 (1") C/SUNK
ADHESIVE FIXING URETHANE MASTIC ADHESIVE

NYLON PLUG FOR CONCRETE 5 X 25 (1")



PRODUCT CODE ALN1

APPLICATION EMERGENCY AND SERVICE STAIRS
GRIP TAPE INSERTS - NOT GLOWSTRIP CAPABLE

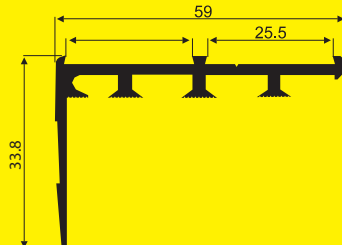
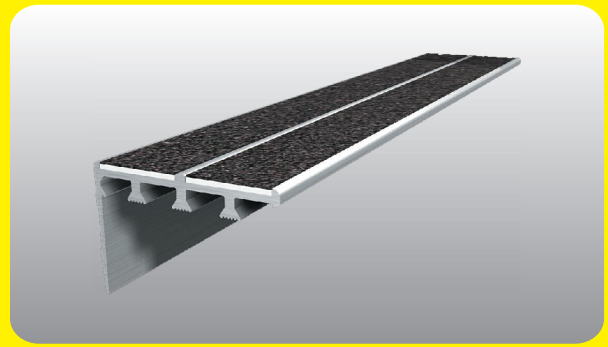
BASE MATERIAL 6060 T5 ALUMINIUM - MILL FINISH

MAXIMUM LENGTHS EXTRUSION 5.0M/INSERTS 1.8M



ADHESIVE FIXING URETHANE CARTRIDGE ADHESIVE/SEALANT

DESIGN



PRODUCT CODE ALNCP

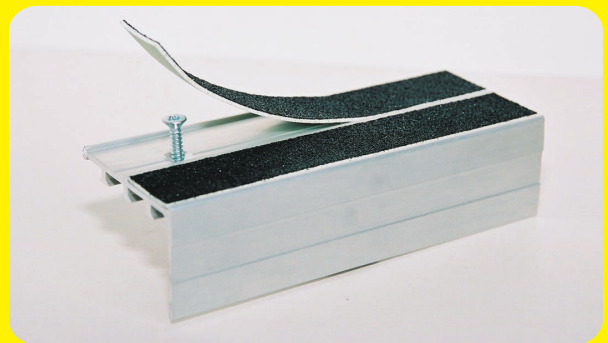
APPLICATION CARPET NOSING
GRIPSTRIP INSERTS WITH OPTIONAL
GLOWSTRIP INCLUSION

BASE MATERIAL 6060 T5 ALUMINIUM - ANODISED

MAXIMUM LENGTHS ANY LENGTH UP TO 6 METRES

DETAILS

FIXING



SCREW FIXING 8G x 25 (1") C/SUNK
ADHESIVE FIXING URETHANE MASTIC ADHESIVE

NYLON PLUG FOR CONCRETE 5 X 25 (1")



THE ULTIMATE IN ANTI-SLIP AND WAY FINDING SYSTEMS

▲ **GLOWSTRIP** is a super high performance, self charging photoluminescent material set into a fine aluminium extrusion. In darkness or in times of emergency each stair nosing will glow brightly and clearly define the path to safety. No electrical connections required. 100% reliable performance. Hours of reliable luminance. Place one or more Architectural Stair Nosings in any of the rebates of the Architectural Nosings together with the non-slip ASMAT inserts.

▲ **Gripstrip** is a multi layered and reinforced PVC material offering excellent anti-slip and high wear characteristics. The anti-slip feature of Gripstrip is an integral part of the material and not a thin surface coating as is common with lesser products. Gripstrip demonstrates a wet coefficient of friction of 0.51 to meet all international pedestrian safety codes.